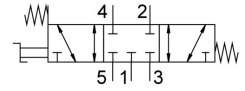


# Hand lever valve VHEF-HS-P53C-M-N18

Part number: 4414857

FESTO



## Data sheet

| Feature                                  | Value  |
|--|--|
| Valve function                           | 5/3, closed  |
| Actuation type                           | Manual   |
| Width                                    | 20 mm  |
| Standard nominal flow rate               | 700 l/min  |
| Pneumatic working port                   | 1/8 NPT  |
| Operating pressure                       | -0.095 MPa ... 1 MPa   |
| Operating pressure                       | -0.95 bar ... 10 bar   |
| Structural design                        | Piston gate valve  |
| Reset method                             | Mechanical spring  |
| Nominal width                            | 5.2 mm   |
| Type code                                | VHEF   |
| Exhaust air function                     | With flow control option   |
| Application note                         | Operate by hand only   |
| Sealing principle                        | Soft   |
| Mounting position                        | Any  |
| Type of control                          | Direct   |
| Flow direction                           | Reversible   |
| Symbol                                   | 00995890   |
| Lap                                      | Overlap  |
| Max. switching frequency                 | 0.5 Hz   |
| Explosion prevention and protection      | Zone 1 (ATEX)<br>Zone 2 (ATEX)<br>Zone 21 (ATEX)<br>Zone 22 (ATEX) |
| Operating medium                         | Compressed air as per ISO 8573-1:2010 [7:-:-]                      |
| Information on operating and pilot media | Operation with oil lubrication possible (required for further use) |
| Corrosion resistance class (CRC)         | 1 - Low corrosion stress   |
| Temperature of medium                    | -10 °C ... 60 °C   |
| Ambient temperature                      | -10 °C ... 60 °C   |
| Actuating torque                         | 0.7 Nm   |
| Max. force on actuator                   | 200 N  |
| Max. transverse load on actuator         | 200 N  |
| Product weight                           | 265 g  |
| Type of mounting                         | Optionally:<br>Front panel mounting<br>With through-hole           |
| Pneumatic connection 1                   | 1/8 NPT  |

| <b>Feature</b>         | <b>Value</b>                     |
|------------------------|----------------------------------|
| Pneumatic connection 2 | 1/8 NPT                          |
| Pneumatic connection 3 | 1/8 NPT                          |
| Pneumatic connection 4 | 1/8 NPT                          |
| Pneumatic connection 5 | 1/8 NPT                          |
| Note on materials      | RoHS-compliant                   |
| Cover material         | PA-reinforced                    |
| Seals material         | NBR                              |
| Housing material       | Wrought aluminum alloy, anodized |
| Lever material         | PA-reinforced                    |